

**Request for Quotes**  
**Holistic and Sustainable Trail Plan**  
**Midewin National Tallgrass Prairie**

(a) **Background and Statement of Work:** The National Forest Foundation and U.S. Forest Service invite experienced trail planning consultants to submit quotes for the development of a Holistic and Sustainable Trails Plan for Midewin National Tallgrass Prairie (MNTP). The Trails Plan will be the roadmap to develop and maintain a shared-use network of non-motorized trails that span the 15,000+ acres at Midewin National Tallgrass Prairie and increase connectivity with adjacent communities and other public lands. Once the site of the country's largest U.S. Army ammunition manufacturing plant, MNTP is now the only tallgrass prairie permanently protected and managed under the U.S. Forest Service. It is also the largest piece of public land in the archipelago of protected areas that collectively comprise the Chicago Wilderness. Since being transferred to the U.S. Forest Service in 1996, MNTP has had the mission to provide a framework that enables multiple uses including 1) restoration of the grassland habitats, 2) research, 3) agricultural production, and 4) recreation. Much progress has been made in the first three purposes, but the focus of this next phase is the quality of experience, availability of opportunities and level of engagement with the public. Today, about 13,000 acres of Midewin are open to the public for recreational use. MNTP offers approximately 22 miles of non-motorized trails (see Maps 2 and 3, Appendix B). These trails are open to non-motorized uses, including bicycling and hiking. Additionally, 20 miles of the existing system allows for pack and saddle use. Most of these trails are on old roadbeds; however, some trails are limestone based. Picnic tables and portable toilets are available at all trailheads; however, water is not. As Midewin looks to increase the variety of recreation opportunities available for users, the MNTP has identified a need for:

- a) A review of the existing 22-mile trail system and proposed location of the Elwood Area Bike Connector (FLAP funded).
- b) A trail design and layout that incorporates opportunities for improvements or reroutes to existing recreation infrastructure, and the development of new trails.
- c) A detailed plan serving as a roadmap to develop a shared-use network of trails and public engagement activities at Midewin.

**Information Requested**

If interested in submitting a bid for this project, please provide a quote for the above statement of work by providing:

- technical approach
- work experience with similar projects
- cost
- capacity/timeline for this project

Specific requirements are detailed below.

## I. PROJECT OVERVIEW AND REQUIREMENTS

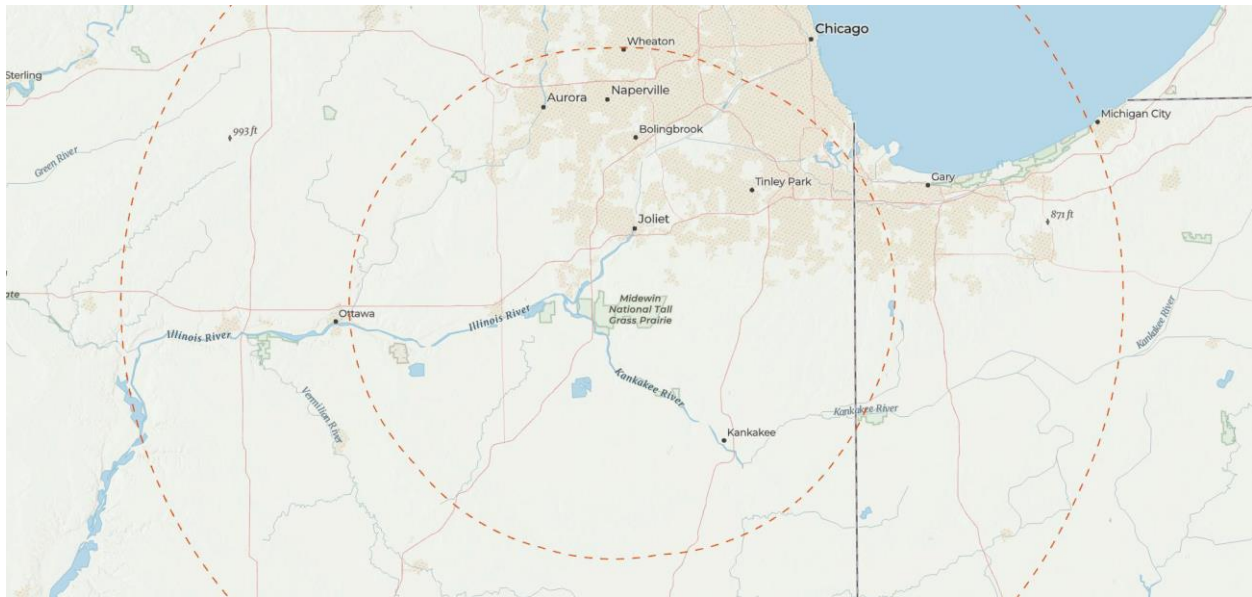
### General Specifications

(b) Description of Work – This Request for Quotes is for planning and designing trails as part of a Holistic and Sustainable Trails Plan at MNTP including the following:

1. Review the 22 miles of currently existing recreational infrastructure (hiking, biking, and equestrian use) at MNTP considering, visitor infrastructure (e.g. parking, trailhead signage), experiences offered, and gaps in trail connectivity and experience (see Maps 2 and 3, Appendix B).
2. Produce a proposed design and layout for developing a holistic and sustainable shared-use network of trails (not to exceed) 48 miles which includes trailheads, trails, and auxiliary infrastructure for visitor enjoyment of the trails and rest points and incorporates opportunities for improvements or reroutes of existing recreation infrastructure as well as the development of new trails in accordance with specifications outlined in the 2002 Prairie Management Plan (Appendix A).
3. Create a comprehensive plan identifying trail development priorities, impediments, recommended phasing, and next steps.

The Contractor shall identify what they can supply in terms of materials, labor, equipment, supplies, supervision, quality control, and incidentals required to complete the work described. The Contractor shall perform all work in a safe and conscientious manner.

(c) Project Location and Description – Midewin National Tallgrass Prairie, IL-53, Wilmington, IL 60481. MNTP is the largest public conservation land parcel located in the greater Chicago metropolitan region and is within a 1½-hour drive of more than 9 million people. It lies in Will County, the fastest growing county of the entire Chicagoland region. MNTP is divided into an “east side” and a “west side,” with Illinois Highway 53 dividing the two dominant land types. The west side includes approximately one-third of MNTP, most of which is characterized by a level outwash plain with more shallow soil. Approximately two thirds of MNTP lies on the east side of Highway 53, where the landscape is predominantly a rolling ground moraine (till plain) where the soils are deeper. The land type division defines some important differences in potential habitat and needs for protection of habitat. For example, the rare dolomite prairie habitat, home for many of the sensitive species, lies entirely within the west side. The trail review will include the 22 miles of multi-use trails within MNTP. The Trail Design will include opportunities for improvements and/or reroutes to existing trails as well as opportunities for new trails, not to exceed 48 miles of trail total, as stated in the 2002 Prairie Management Plan (Appendix A). See additional maps in Appendix B.



(d) Work Schedule – Work is estimated to begin in the summer of 2024. The work schedule will be determined in partnership with the selected contractor(s), NFF and the Forest Service. All contracted work must be completed by December 1, 2025.

**Other Project Requirements and Specifications**

(a) Utilities – In many locations there will be no or limited sanitation, water, electrical or housing services available. The Contractor shall make its own arrangements for temporary facilities if needed.

(b) Specifications – Project work shall be accomplished in accordance with the following:

- **Prairie Purpose:** The Illinois Land Conservation Act (ILCA), signed in 1996, is the enabling legislation that established Midewin National Tallgrass Prairie to be managed as part of the National Forest System, and it provides specific and unique direction for its management. ILCA section 2914 states the following purposes:
  - 1) To manage the land and water resources of Midewin in a manner that will conserve and enhance the native populations and habitats of fish, wildlife, and plants.
  - 2) To provide opportunities for scientific, environmental, and land use education and research.
  - 3) To allow the continuation of agricultural uses of lands within Midewin consistent with section 2916 (b).
  - 4) *To provide a variety of recreation opportunities that are not inconsistent with the preceding purposes.*
- **Midewin Land and Resource Management Plan:** The Trails Plan will address one of the deferred action items for recreation development outlined in the 2002 Prairie Management Plan. (Appendix A).
- **U.S. Forest Service Standards of Specifications:** This work shall be completed in accordance with Standard Specifications for Construction and Maintenance of Trails and/or Standard Specifications for Construction of Trails and Trail Bridges on Forest Service Projects.

## **Insurance Requirements**

Upon selection of the winning bid, the Contractor agrees that it has and shall maintain the following insurance coverage indicated below. The effective date of all coverage shall precede the start of any work.

- a. State minimum workers' compensation insurance coverage for its employees, if any.
- b. Broad form general liability, property damage, and automotive liability insurance in the minimum amount of \$1,000,000 for bodily injury, death, or damage to property of any person and \$2,000,000 for bodily injury, death, or damage to property of more than one person. The Contractor shall name NFF an Additional Named Insured and provide NFF with a certificate of insurance evidencing such coverages, prior to the initiation of the Scope of Services.
- c. If the Scope of Services includes professional services as identified herein, Contractor shall also provide professional errors and omissions liability insurance. Professional services for purposes of this section include, but are not limited to performing architecture, engineering, landscape architecture, land surveying or planning, preparation and signing or stamping of drawings, maps, surveys or construction specifications, or design and development of computer software, programs or websites by the Contractor or by subcontractors on behalf of the Contractor, for which professional liability insurance would typically be required. The minimum coverage limits required are \$1,000,000 for each claim and \$1,000,000 annual aggregate.

## **Prohibited Telecommunications Services and Equipment**

The Contractor is responsible for compliance with the prohibition on certain telecommunications and video surveillance services or equipment identified in 2 CFR 200.216.

**American Made Products.** The work associated with this RFQ is subject to Build America, Buy America Act. P.L. 117-58, Secs 70911-70917, and as such, domestic content procurement preference requires all iron and steel, manufactured products and construction materials used within the scope of this Agreement, be produced in the United States.

## **Federal Exclusion Verification**

The selected Contractor will be required to affirm that neither it nor its principals are presently debarred, suspended, proposed for debarment, declared ineligible, or voluntarily excluded from participation in this transaction by any Federal department or agency.

## **Federal Flowdown Provisions**

Flowdown Requirements: Any Agreement associated with this RFQ may be subject to flowdown requirements under associated federal or state funding agreements, which are included and made part of by this reference.

**(b) REQUIRED COMPONENTS**

**Technical Quote**

Please provide a detailed technical approach to the work.

**Contractor Qualifications**

- (a) Past Experience – Please provide a brief explanation of previous work experience with land management agencies.
- (b) References – Please provide three professional references that can speak to past performance.

**Pricing Schedule**

Contractor shall price work according to the schedule below. Prevailing wages are required per conditions of funding sources.

	<b>Task/Item</b>	<b>Units</b>	<b>Unit Cost</b>	<b>Extended Cost</b>
	Existing Trail Review			
	Trail Design and Plan			
			<b>Total Bid</b>	

**(c) SUBMISSION, EVALUATION, AND CONTACTS**

**Contractor Selection Process**

The NFF will use the Evaluation Factors below to review each submitted bid. Based on the outcomes of that selection process, the NFF will notify successful and unsuccessful bidders in May 2024, and will prepare a separate contract document.

- Price
- Previous Work History
- References
- Contractor availability / Project timeline

**Point of Contact**

Please submit any questions about the project in writing to the Point of Contact.

Brittney Halliday  
National Forest Foundation, Midewin Program Coordinator  
[bhalliday@nationalforests.org](mailto:bhalliday@nationalforests.org)

**Bid Submission**

Submit bids via email to [bhalliday@nationalforests.org](mailto:bhalliday@nationalforests.org) by April 19, 2024.

Brittney Halliday

Midewin Prairie Program Coordinator - National Forest Foundation

Phone: 815.262.2254

[bhalliday@nationalforests.org](mailto:bhalliday@nationalforests.org) | [nationalforests.org](http://nationalforests.org)

**Equal Opportunity Provider**

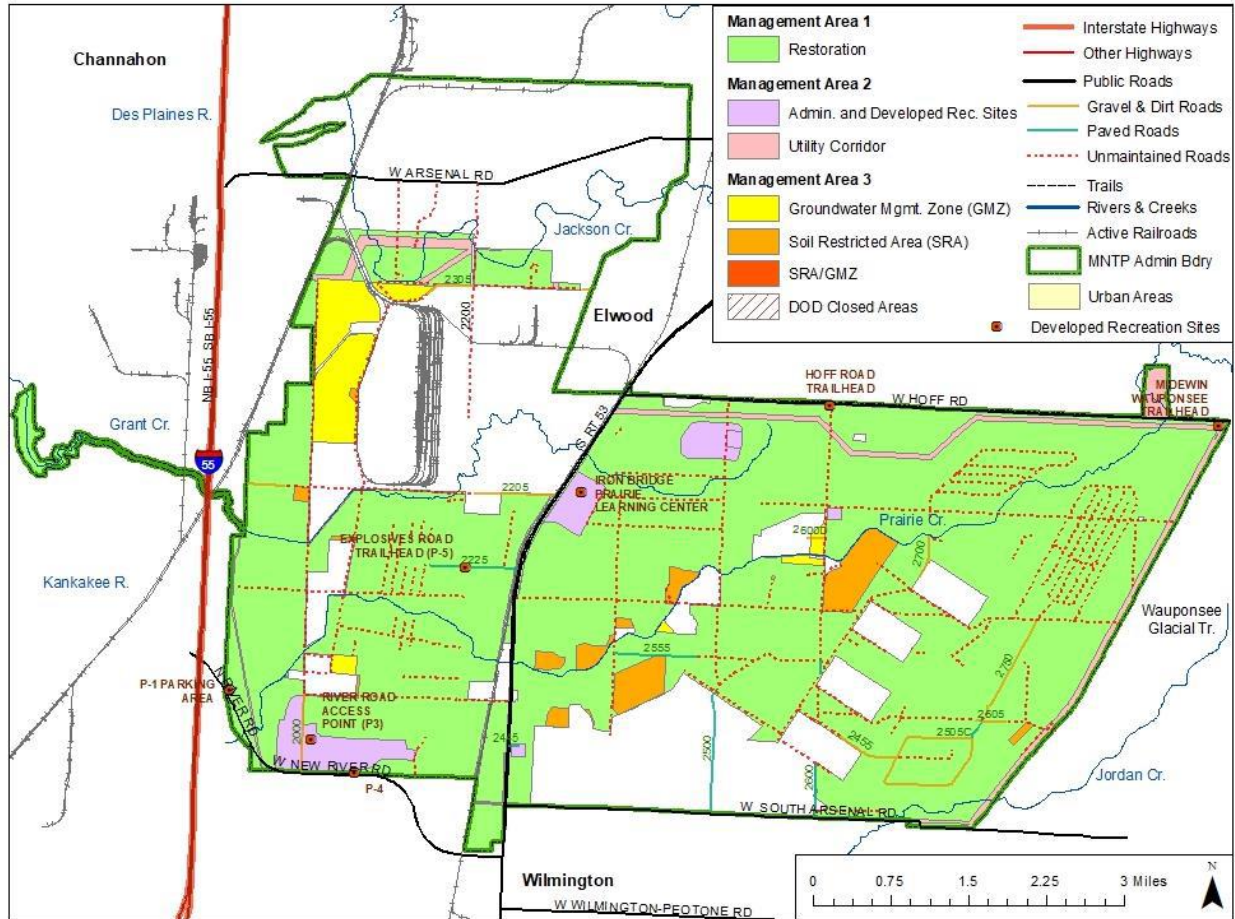
In accordance with Federal law and U.S. Department of Agriculture policy, the National Forest Foundation is prohibited from discriminating on the basis of race, color, national origin, sex, age, religion, political beliefs, or disability.

**APPENDIX A - 2002 PRAIRIE MANAGEMENT PLAN**

[HTTPS://WWW.FS.USDA.GOV/DETAIL/MIDEWIN/LANDMANAGEMENT/PLANNING/?CID=STELPRDB5157483](https://www.fs.usda.gov/detail/midewin/landmanagement/planning/?CID=STELPRDB5157483)

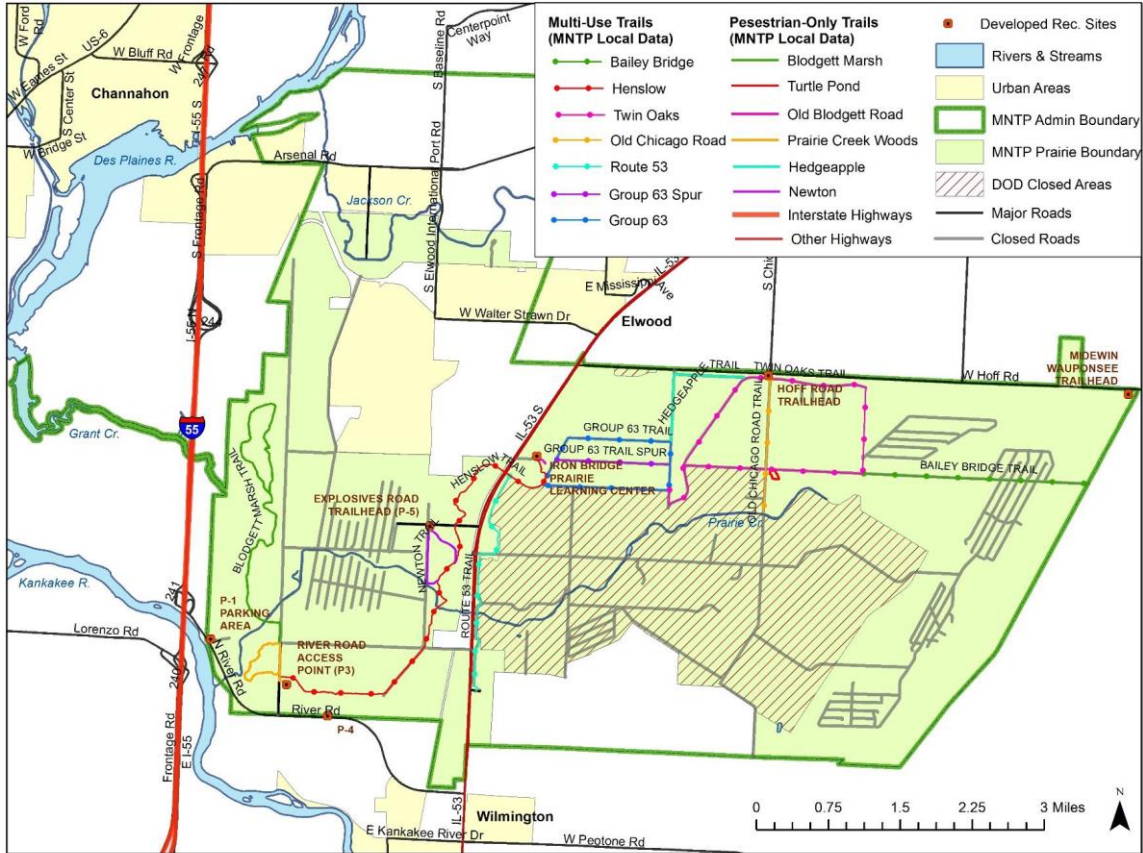
# APPENDIX B - MAPS

## MAP 1 – MIDEWIN PRAIRIE MANAGEMENT AREAS



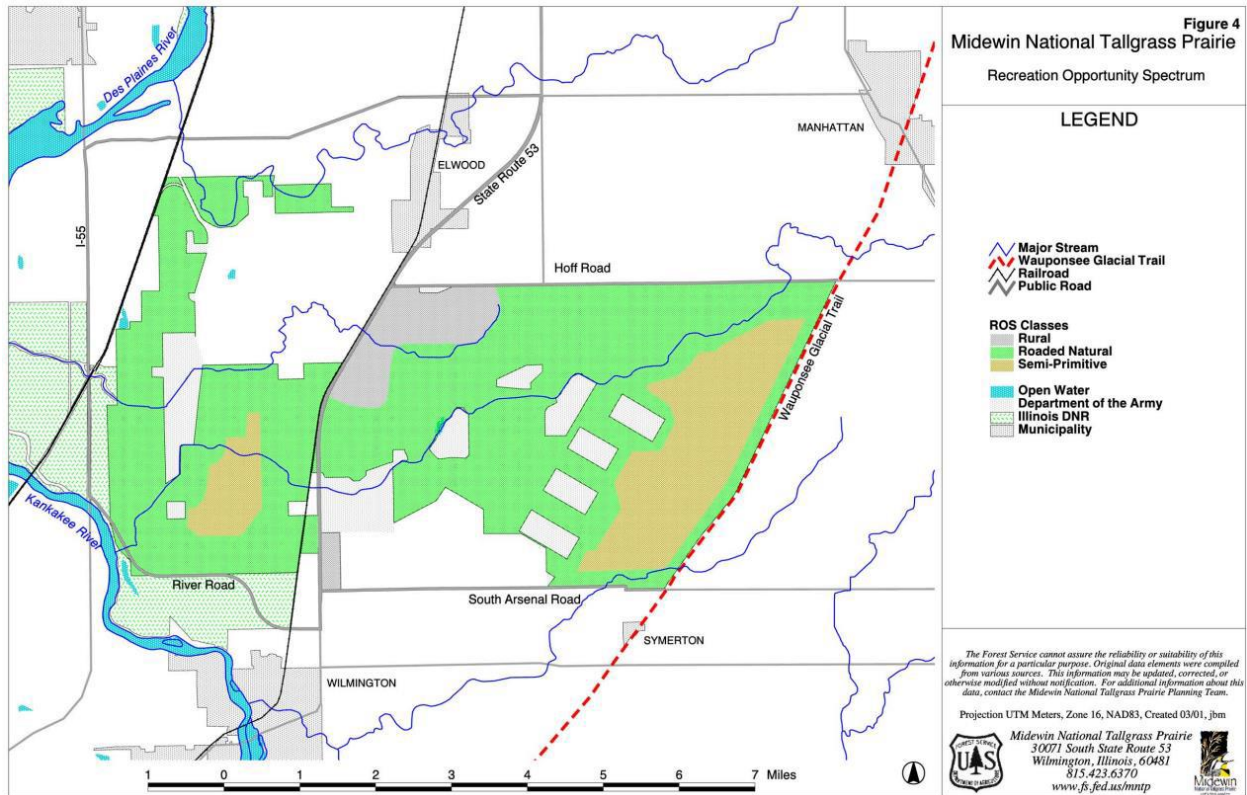


# MAP 2 - TRAILS BY MANAGED USE

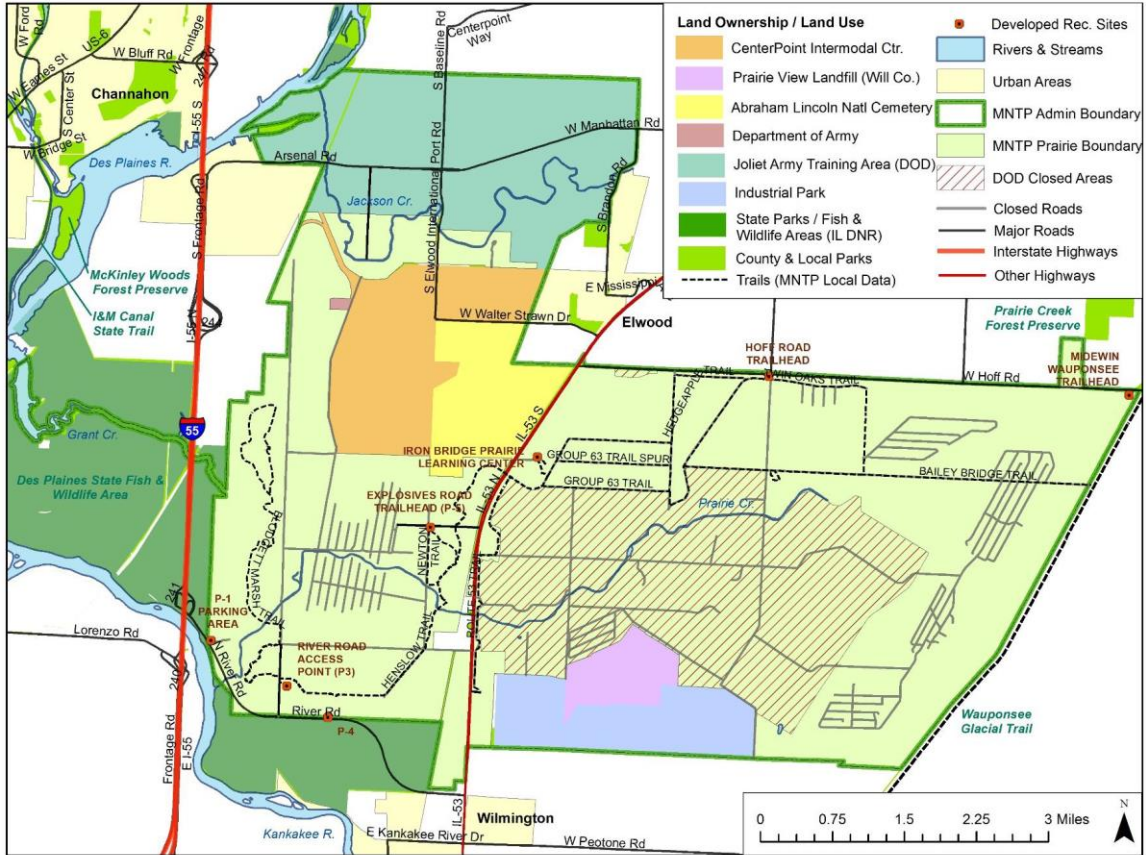




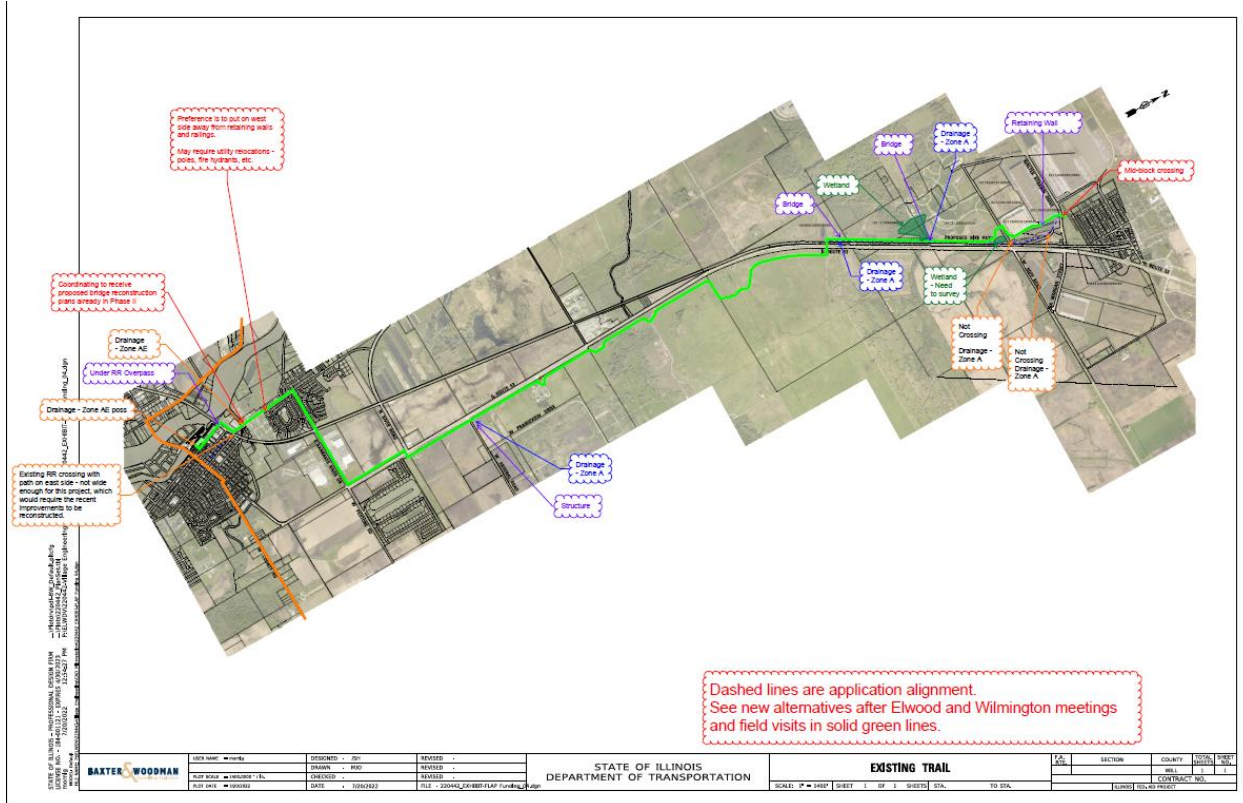
# MAP 4 – RECREATION OPPORTUNITY SPECTRUM CLASSES



# MAP 5 – LAND OWNERSHIP



# MAP 6 – ELWOOD AREA BIKE CONNECTOR (PROPOSED)



STATE OF ILLINOIS PROFESSIONAL ENGINEER LICENSE NO. 121202142 EXPIRES 12/31/2022 BAXTER WOODMAN 1100 N. WASHINGTON ST. CHICAGO, IL 60610	USER NAME: HW4 DATE: 4/18/2022 FILE: Z00442480147.rvt	DISIGNED: JG DRAWN: JG CHECKED: JG DATE: 4/18/2022 FILE: Z00442480147.rvt	REVISION: 1 REVISION: 1 REVISION: 1 DATE: 4/18/2022 FILE: Z00442480147.rvt	STATE OF ILLINOIS DEPARTMENT OF TRANSPORTATION	EXISTING TRAIL SCALE: 1" = 100' SHEET 1 OF 1 SHEETS STA. TO STA.	SECTION COUNTY TOWNSHIP RANGE SECTION COUNTY TOWNSHIP RANGE SECTION
--	---	---	--	---	---	---